



Eliminating Infrastructure Barriers to IP Telephony Adoption

Introducing the Phybridge PoLRE Switch Innovation

Power over Long Reach Ethernet

Cost Effective, Simple, Robust

Agenda

- Phybridge Introduction
- The Barriers to IP Adoption - Can You Relate?
- What Makes TDM Voice 5nines Reliable - Technology or Topology?
- PoLRE Switch Innovation - IP Telephony in 3 Easy Steps.
- Over \$1 Million in Savings - Customer References.
- Q&A and Next Steps.

“We completed multiple sites with approximately 1,000 endpoints and the migration was quick and easy. The Phybridge solution delivered as claimed!”

New Mexico State University

“We saved over \$1.5 million, fast tracked the project by 6 months and completed our 1,200 plus user deployment in a single weekend thanks to the Phybridge switch innovation.”

TransUnion Credit

Phybridge Introduction

Industry Recognition



Cool Vendors in Enterprise Communications Applications, 2010



AVAYA



NEC

BROADSOFT

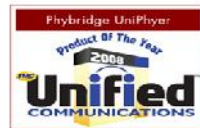
ShoreTel

UNIFY

North American Company

Leaders in Long Reach PoE Switching

Award-Winning Product



20 Notable Communications Infrastructure Products, 2012



Award-Winning Switches

Large Customer Base



250,000+ Users Globally

Proudly Teaming with:

- Avaya & Phybridge alliance: -
<https://www.devconnectmarketplace.com/phybridge/phybridge-polre>
- Mitel+Aastra – OEM Agreement:
http://www.mitel.com/sites/default/files/Mitel_Streamline_Data_Sheet_11-13.pdf
- Broadsoft & Phybridge alliance –
<http://www.broadsoft.com/partners/partners-showcase/enterprise-equipment/>
- Cisco & Phybridge alliance:-
https://marketplace.cisco.com/catalog/products/5848?ms_category=collaboration

24-Port PoLRE Switch with 24 PhyLink Adapters
SP-PHYBRIDGE-24

48-Port PoLRE Switch with 48 PhyLink Adapters
SP-PHYBRIDGE-48



Viv Singh

From: Wiest, Paul <paul.wiest@unify.com>
Sent: 16 January 2014 12:03
To: Viv Singh
Cc: Steven Fair
Subject: RE: Phybridge/Nimans/Unify mtg 13/1/14

Happy to help out.

Love your product.

Mit freundlichen Grüßen - Kind Regards

unify empowering your enterprise

Paul Wiest, C.P.M. / Senior Manager, Global Procurement
+1 (407) 942-4142 / paul.wiest@unify.com

Unify Inc.
400 Colonial Center Parkway, Suite 270
Lake Mary, FL 32746-7683
unify.com



Our Partnership with Major Carriers

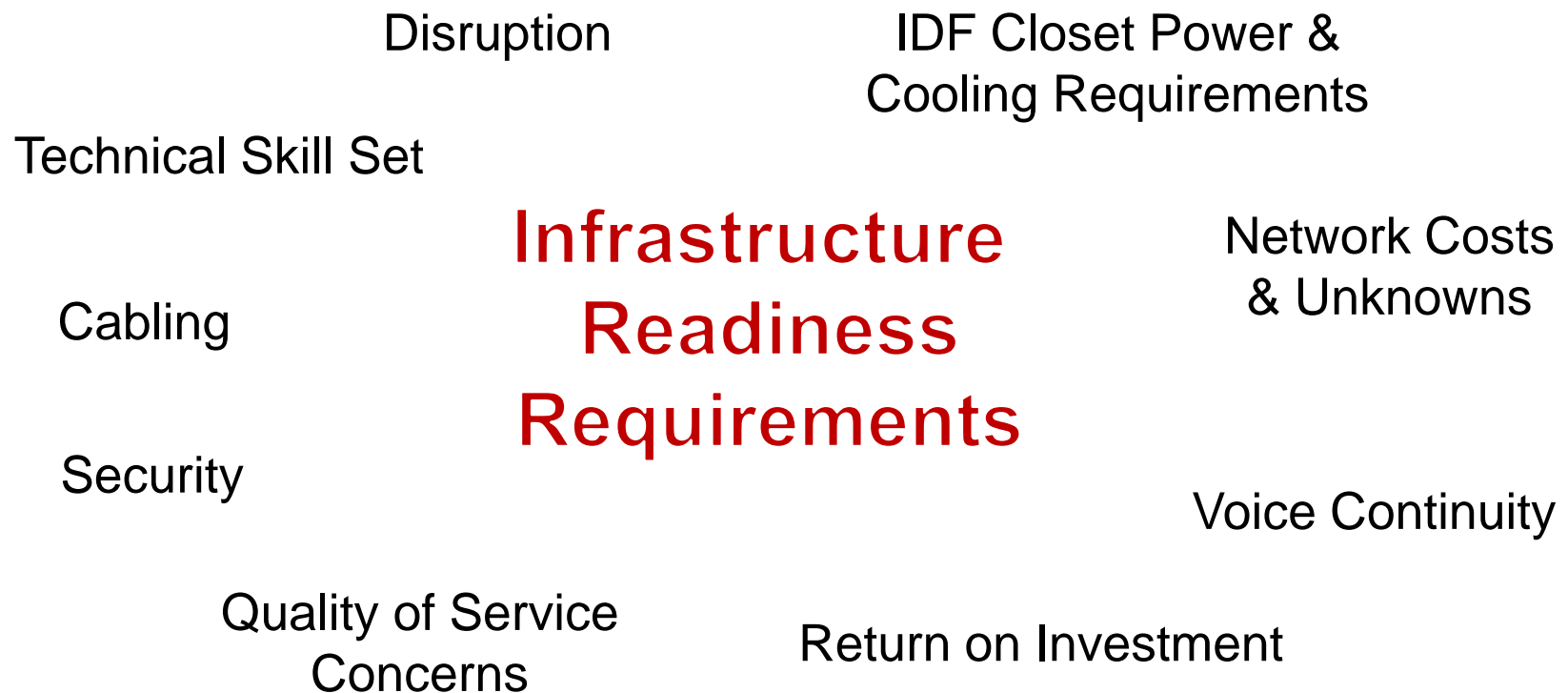
North American & European Carriers selling Phybridge solution:



European Carriers we are looking to Recruit /onboard:



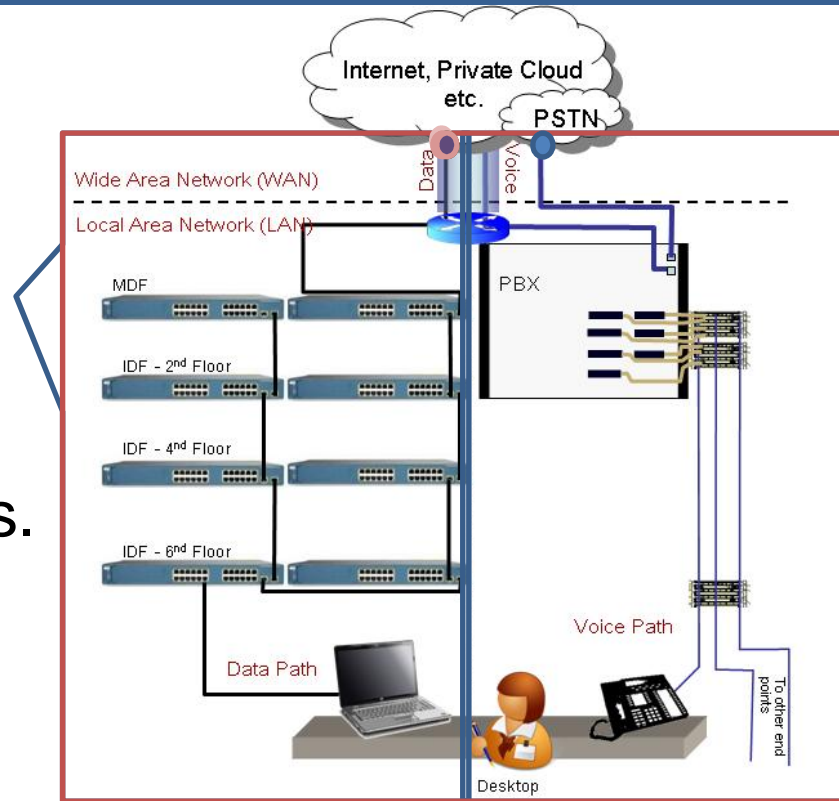
Potential Barriers to IP Telephony Adoption



Understanding the Current LAN Platform

Data:

A **shared** distributed topology supporting all users data needs.

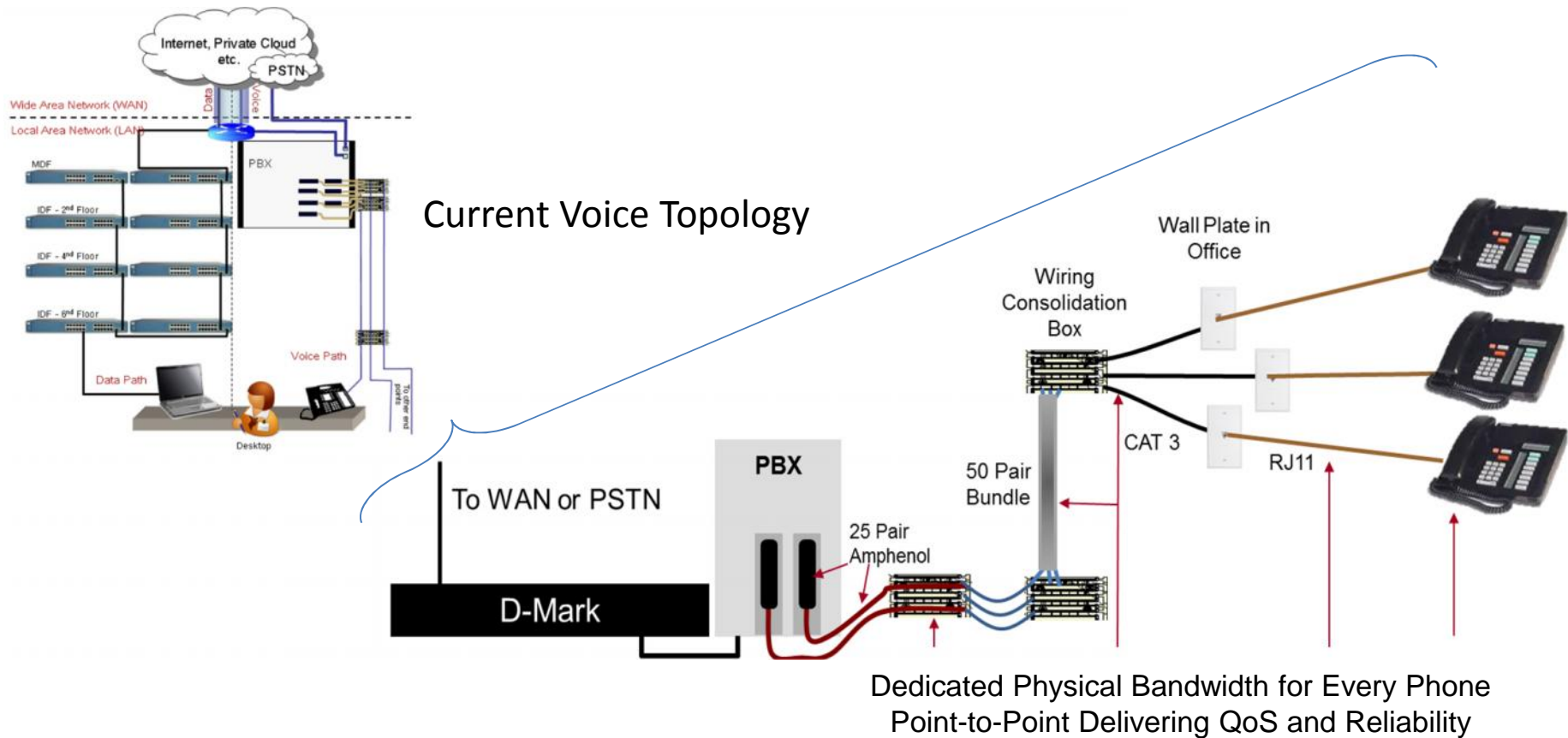


Voice:

A **dedicated** point-to-point topology delivering 5nines reliability.

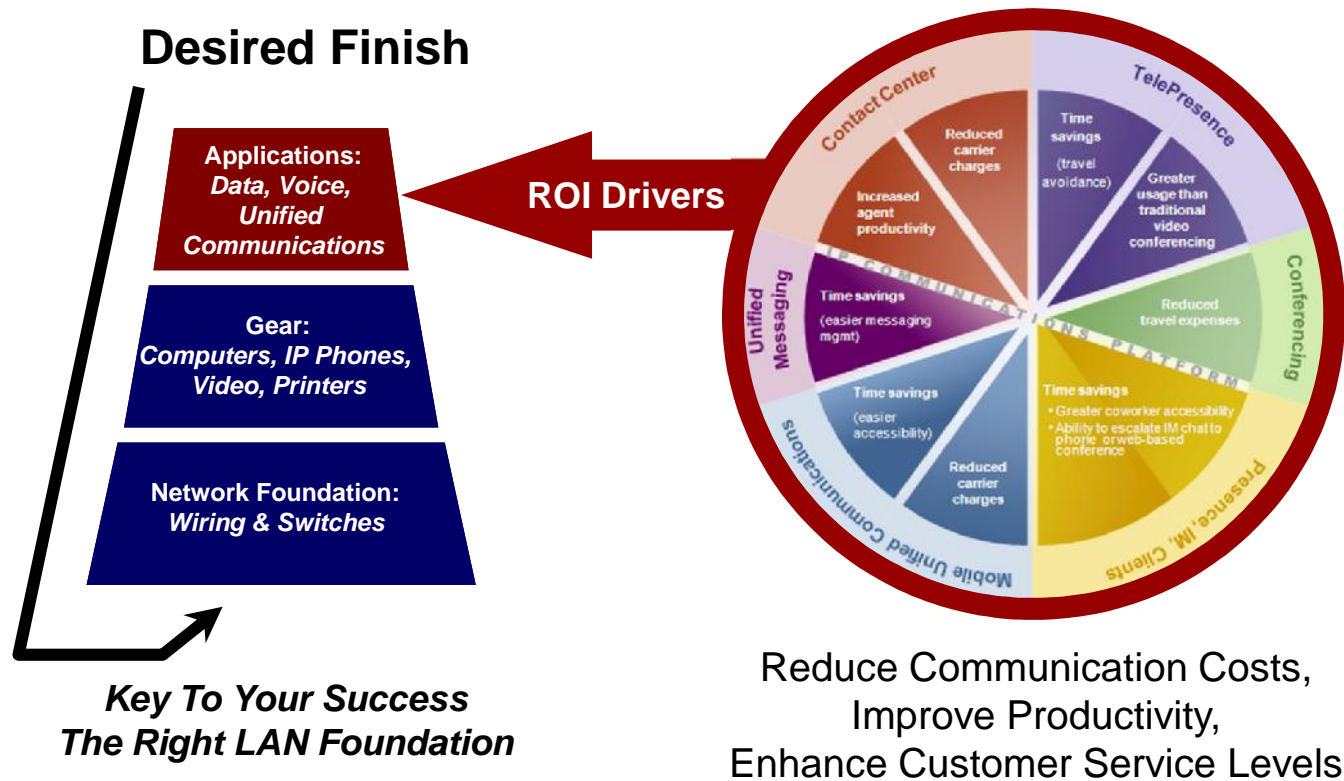
Objective: To bring together and deliver a robust converged all IP platform.

Voice Infrastructure: Proven Reliable and Robust



Maximizing Your TDM to IP ROI

A Better Start For The Best Finish



Cost Effective, Simple, Robust Designed to Eliminate Infrastructure Barriers



8, 24 & 48 Port Phybridge PoLRE Switches

(Power over Long Reach Ethernet)

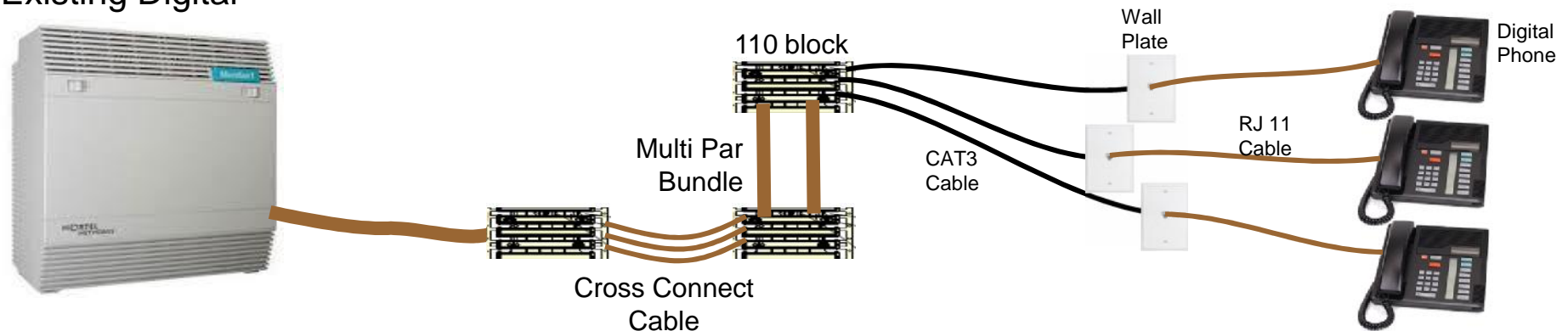
Transform your existing, proven reliable voice infrastructure into an IP path with power ideal for Unified Communications and IP phone deployment.

Ethernet and PoE over a single pair of telephony grade wire with four times the reach of traditional switches.

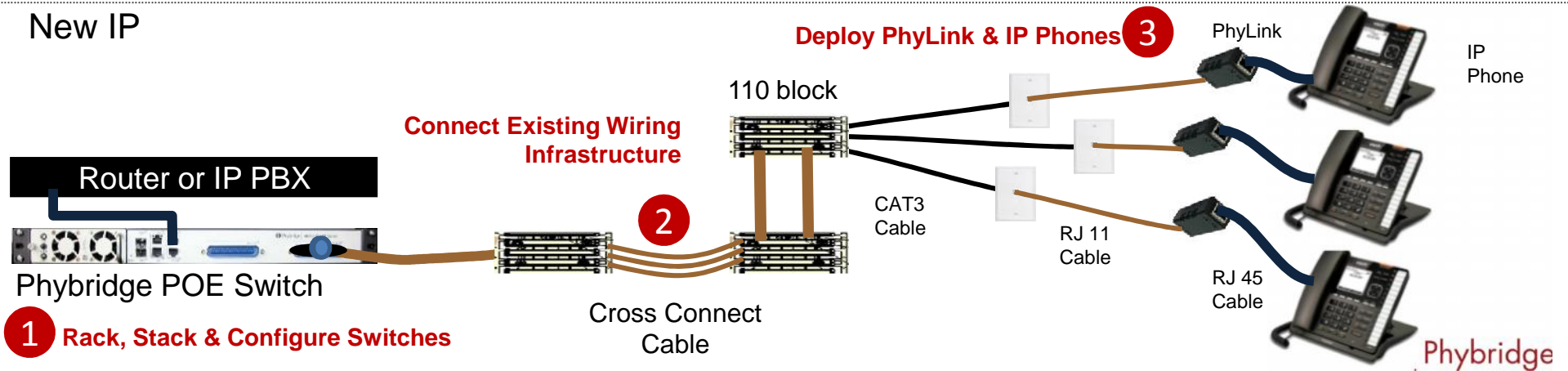
Old Digital Today, New IP Tomorrow

Cost Effective, Simple, Robust

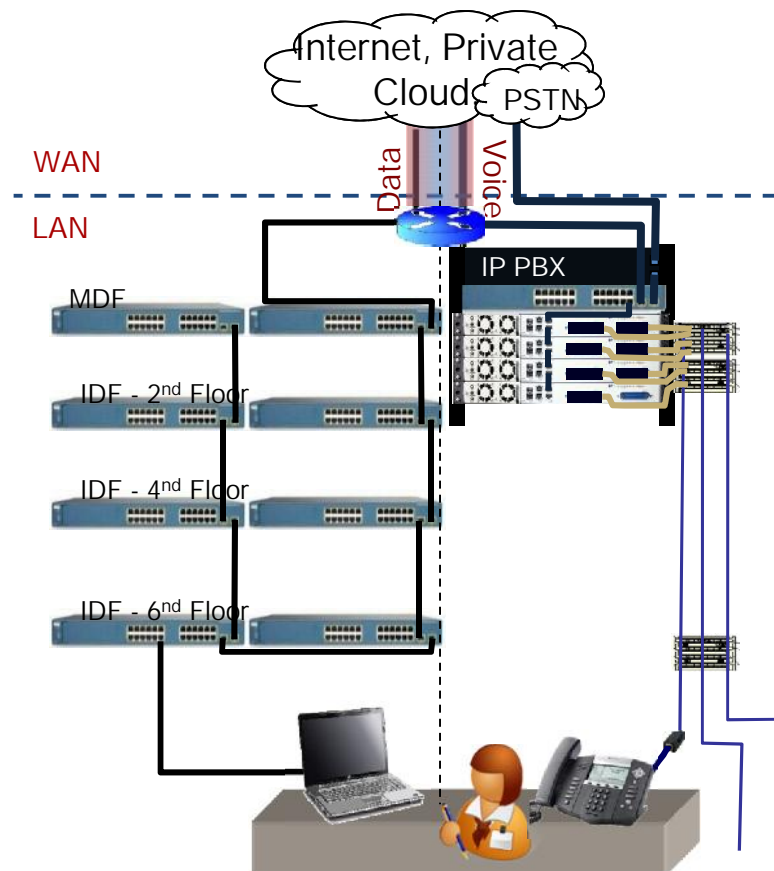
Existing Digital



New IP



LAN Convergence Enabling IPT



Transform Existing Voice Infrastructure

- Ethernet & PoE
- Dedicated Voice Path

Central Convergence

- Single Point - Central
- All UC Value - No Compromise

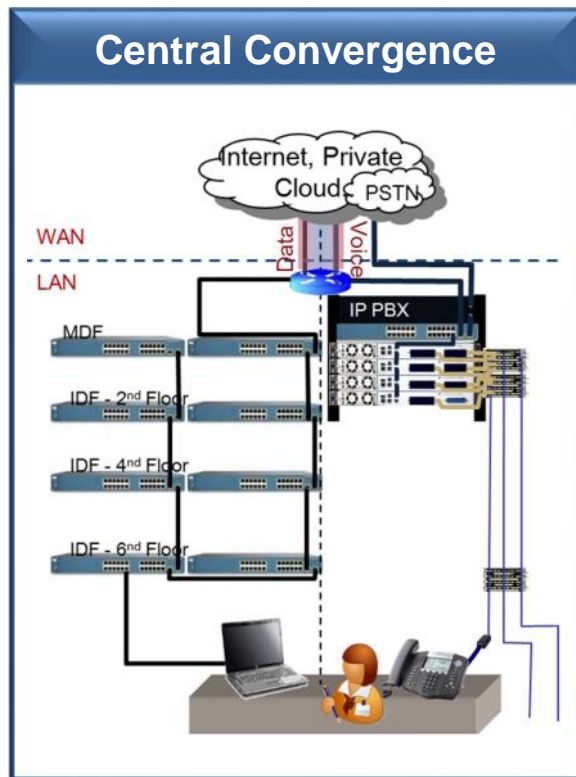
Complement Existing Data LAN

- Data Path

Simplify Migration

- You're in Control

All IP, All the Time, All Made Simple.



Reduce Infrastructure Costs - Better ROI

- No cabling, no IDF closet requirements, less planning cost
- Better PoE port utilization.

No Business or Network Disruption

- Leverage existing infrastructure, compliment existing data LAN.
- Simplify network management for voice.

Eliminate Risk

- Easy real-world proof of concept.
- No pricing risk by leveraging existing asset.

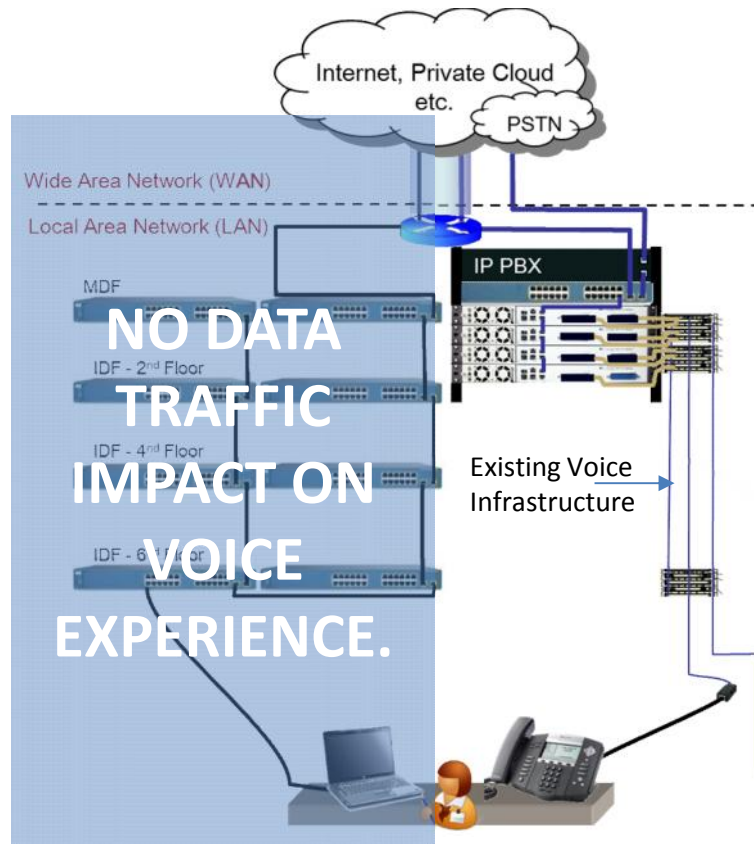
Robust - Installation & Management Made Simple

- Quality of Service: Point-to-point & no data traffic impacting voice quality.
- Voice Continuity: Separate voice path.
- Single point of convergence delivering all applications.

Simplify Future Requirements

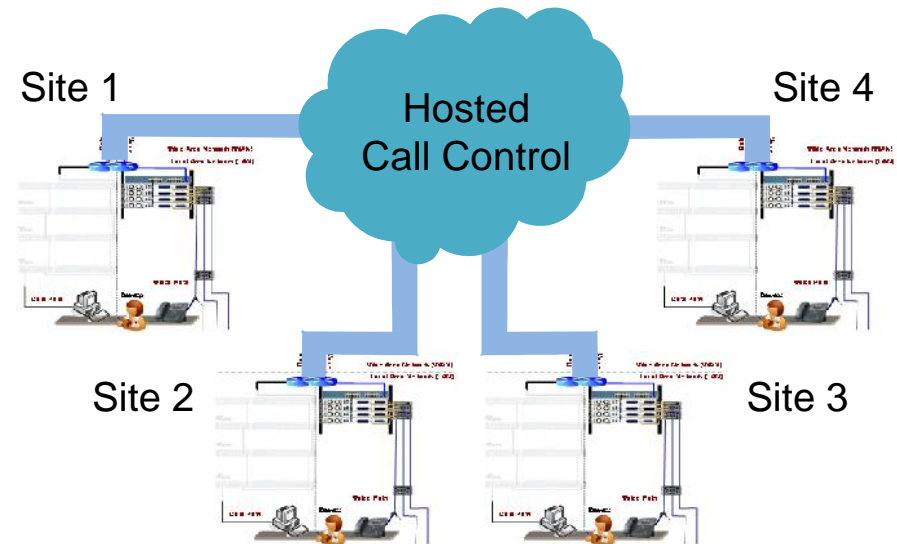
- Data LAN refresh will not impact voice requirements.

Multi Site Migration Made Simple, Fast & Cost Effective

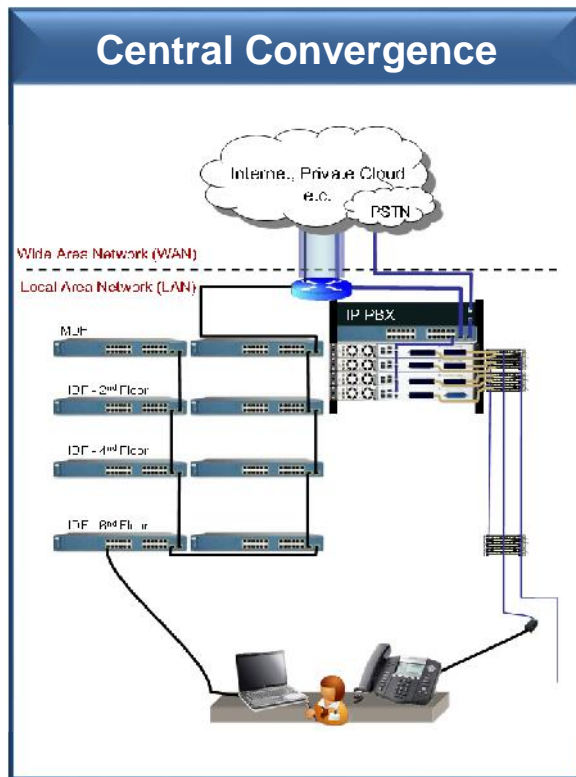


End to End Control

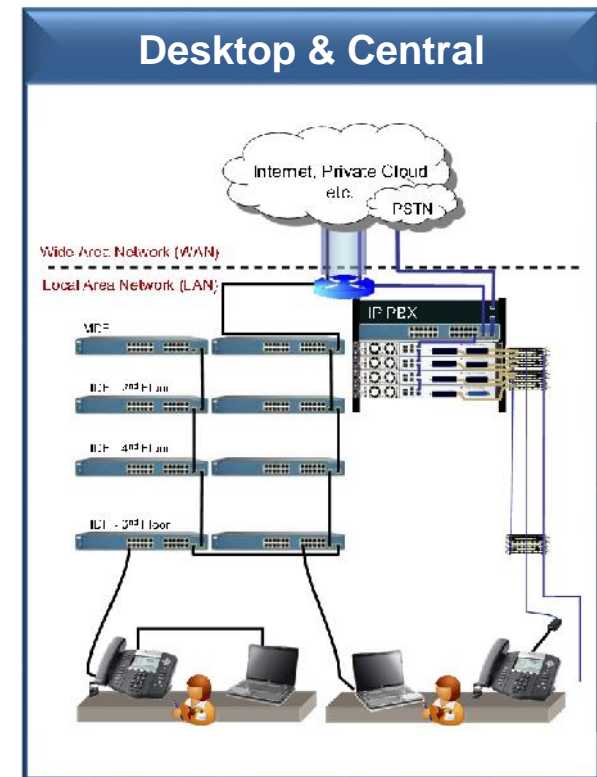
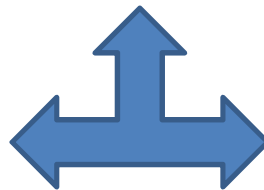
Repeatable, Predictable, Scalable



Customer Choices to An ALL IP Telephony Platform



**ALL IP Strategy
No More Compromise**



Enterprise Quality Managed Data Switch



More Than IP Phones



Supports IEEE 802.3af compliant devices:

- 24 & 48 port configuration; stackable
- Full duplex Ethernet with PoE over a single pair with 1200ft (365m) reach
- 10 Mbs symmetrical - over 100 times IP voice requirements.
- 2 Ethernet and 2 Fiber ports for daisy chaining or spanning tree, for redundancy
- Remote management with a user-friendly Web GUI
- One year manufacturer warranty, with extended warranty and maintenance options available
- Industry-leading power capabilities

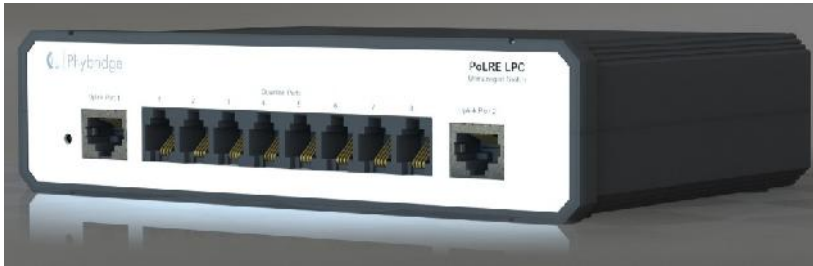
High-Quality Managed Data Switch



- Easy power share setup
- Intuitive web GUI interface
- Remote management by port
- VLAN setup easy
- Easy trouble shooting
- Enhanced security features including
 - Port lockdown
 - Separate point to point Infrastructure
- Protocols supported: CDP, LLDP, Telnet, HTTP, STP, RSTP, NTP, SNMP v2c, TACACS+

Double click to turn power off and on.

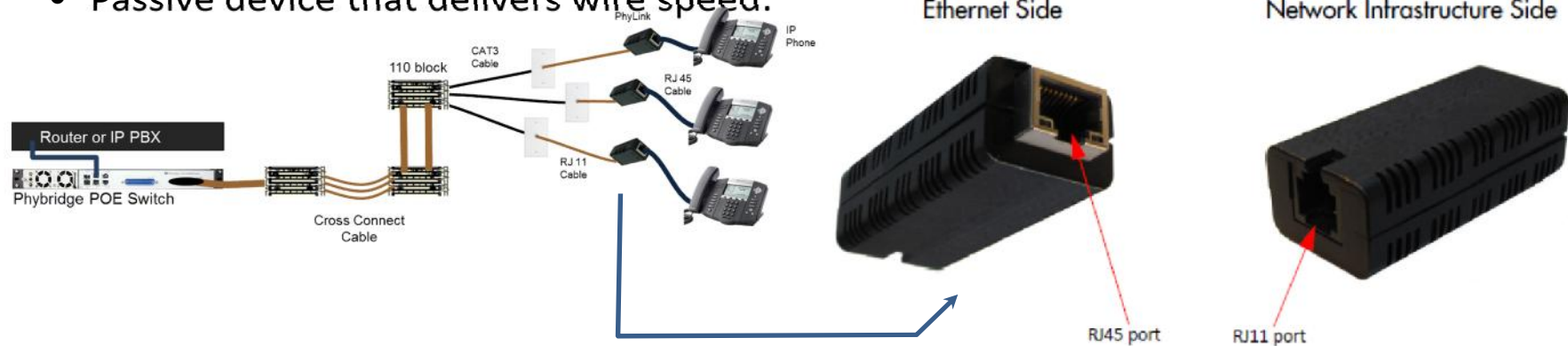
Quick, Easy Migration to Your Hosted VoIP Offering.



- 8 Port Unmanaged switch that delivers Ethernet and PoE over a single pair of wire with 4 times the reach of traditional switches.
- 2 uplink ports for stacking or daisy chaining
- Plug and play solution.
- Quick and easy migration to IPT
- One year manufacturers warranty included.

PhyLink Adapter

- Part number: PL-PA011-06
- Supported switches: PL-024, PL-048, PL-08
- Adapter sold in 6 packs.
- Size of a USB key for aesthetically pleasing installations.
- One per end point required.
- Passive device that delivers wire speed.



Federal Government - Embassy's

- **UK Government - FCO**
 - British Embassies Globally using Phybridge Switch to support IP Telephony
 - Main offices also using Phybridge
 - 15,000 IP End Points
 - Savings in the \$millions
- **Canadian Government - DFAIT**
 - Global deployment on Phybridge backbone
 - Savings in the \$millions



Repeatable, predictable, scalable & highly reliable, easy to manage and secure.

The TransUnion Success Experience

- Looking to Migrate 1,400 users at their 10 floor location in Chicago
- Savings of \$1.5 Million
 - Approval for \$1.8 million
 - Phybridge \$0.3 million
- Proof of Concept
 - Eliminate all Risk
- Fast Track Project by Over 6 Months.
- Successful migration of 1,400 users over a weekend.
- Allocated Savings To Applications



“Sounded to good to be true until I tested it in my environment. I was able to eliminate all my risk before deploying my first IP phone. Great technology.”

Highlight: New Mexico State University

- Migrating to UC & IP Telephony
- Infrastructure costs a concern
- Significant amount of analog phones given barriers
- Discovered Phybridge switch innovation
 - Completed a Proof of Concept
- Barriers removed and deploying 4,000 plus IP phones on Phybridge backbone
- Consistent experience across all locations
- Estimated savings of over \$1 million



“We completed multiple sites with approximately 1,000 endpoints and the migration was quick and easy. The Phybridge solution delivered as claimed!”

[Watch Customer Video](#)



New York Medical Center

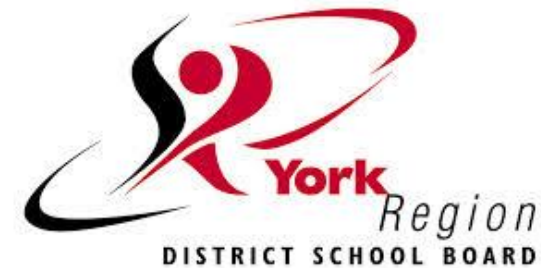
- Migrating to IP Telephony.
- Infrastructure requirements for one building with over 1,000 phones too costly.
- Introduced to Phybridge by consultant
- Completed Proof of Concept and determined that technology can greatly reduce costs while moving to IP Telephony.
- Savings of over \$1 million realized
- Will be using Phybridge technology in future.



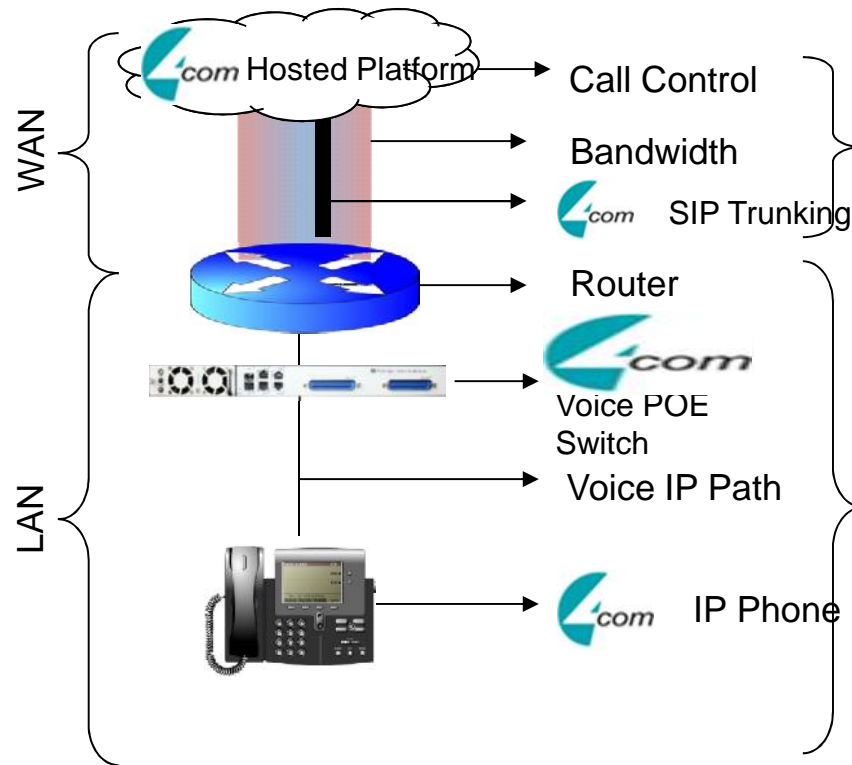
"After deploying the Phybridge technology I realized that I wish I new more about its capability because I would have used it more."

York Region District School Board

- Approximately 200 schools to use PoLRE Switch solution.
- Successfully Migrated over 12 schools.
- Solution Saved Money, Eliminated Disruption and Eliminated Financial Risk.
- Repeatable, Predictable, and Scalable Deployment Across Every School.
- Customer References Available.



4COM Channel Partner Case Study - Components Required For 4COM Hosted IP Solution



**Repeatable, Predictable, Scalable
solution making 4Com Hosted IP
Telephony profitable and scalable from
5 users to 500 users**

How Customers Are Saving \$1 Million Plus With Phybridge

Multiple IDF Closets

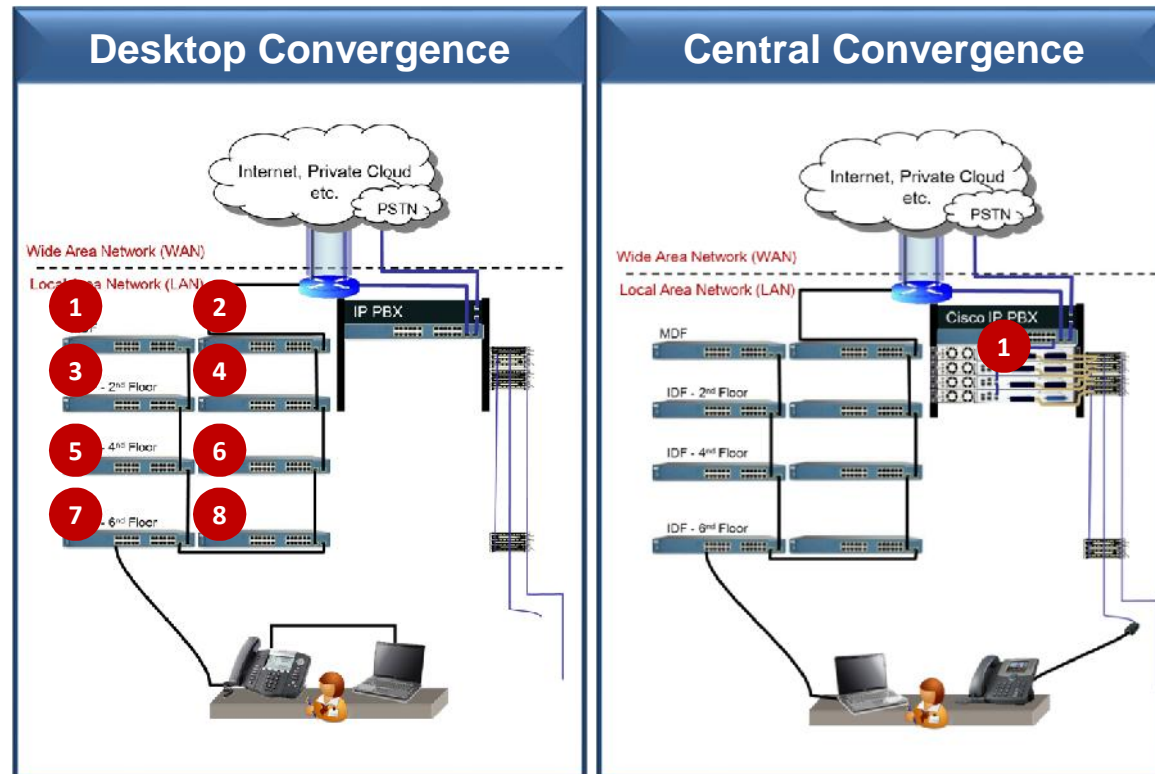
- Power
- Backup Power
- Cooling
- Cabling

Professional Service:

- Assessments
- Planning
- Configuration

Network Management

- QoS
- Security
- Future Networks



1 Main Closet

- Leverage Existing Asset

Professional Services:

- Simplified
- Use Existing Assets

Network Management

- Simplified
- Separate Path

Good For Customers, Great for Partners

“The Phybridge switch solution has proven to be a strong differentiator for us. The value proposition resonates with the customer.”



Where Does the PoLRE Best Fit

EDUCATION

HEALTHCARE

GOVERNMENT

HOSPITALITY

HOSTED

- Large Deployments, High IDF closet costs
- Security concerns
- Network simplicity
- Avoid disruption
- 24/7 operations
- Campus environments
- Multi-location
 - Repeatable, Predictable, Scalable

Which Network Do You Want To Put Your Hosted Voice?

On Their Shared Network?

“Through 2015 at least 50% of hyper-converged solutions will suffer from poor network designs that will degrade performance and cause high level of end-user dissatisfaction .”

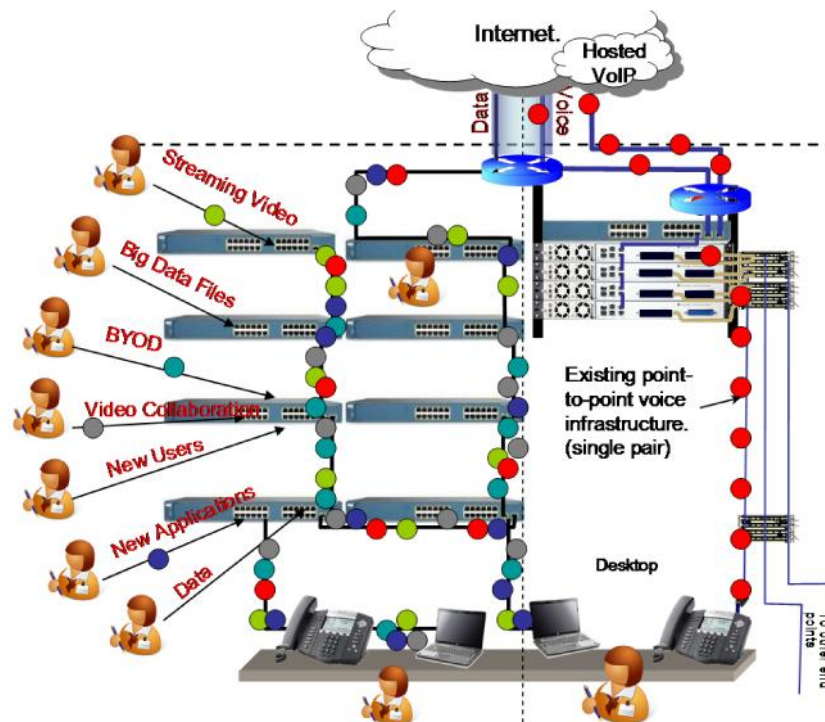
Gartner

Voice on data LAN:
Every device, users, application sharing bandwidth

On Your Dedicated Network?

“We migrated our customer to IP Telephony on a Phybridge Backbone 4 years ago without a single service call. Customer loves the experience, we love the technology.”

Dedicated Voice LAN
Dedicated physical path for Voice per user



Ideal Phybridge Customers

ALL LEGACY VOICE
& IN PLANNING
PHASE FOR IP
TELEPHONY.

**Get Engaged Early
Present Strategic
Option.**

STARTED
DEPLOYMENT BUT
IS FACING
CHALLENGES OR
KEEPING DIGITAL
END POINTS.

**Provide Solution
For All IP - No
Compromises.**

WANTING TO IP
ENABLE OTHER
AREAS SUCH AS
ACCESS POINTS
ETC.

**Highlight Switch
Capabilities.**

Understanding the Sales Signs - Training

“Have You Considered Phybridge.”



“Did you here about the Phybridge PoLRE Data Switch. It transforms the existing voice infrastructure into an IP Path with PoE. IP Telephony deployment is quick, easy and great for customers and you.”

- Asking for Digital Phones
 - Forced to buy because of infrastructure barriers.
 - *“Is the customer facing challenges to IP migration? If so, did you here....”*
- Wanting an Analog Gateway
 - Forced to support old phones because of infrastructure barriers.
 - *“Is the customer forced to keep old phones? If so did you here...”*
- Purchasing an IP System
 - Ask how are they planning to deploy & all IP?
 - *“How are you planning to deploy the IP phones, If you have to keep some old phones I have a solution that allows you to go all IP? Did you here*
- Have a Hosted Voice Offering.
 - *“I have a switch technology being used by Carriers to simplify the migration to your hosted voice offering. You can capture the customer quickly and eliminate complexity and create a platform that provides you end to end control with no data network issues impacting your offering.”*

Go To Market - Approach the customer first. “Have You Considered Phybridge.”



“Did you here about the Phybridge PoLRE Data Switch. It transforms the existing voice infrastructure into an IP Path with PoE. IP Telephony deployment is quick, easy and great for customers and you.”

- Get Involved Early in the Planning with a Differentiator.
 - Before IP voice is deployed customer must get LAN ready. Get to them before they spend more than they need on infrastructure.
 - *“Before you make any investment in infrastructure to support your IP telephony deployment we need to meet. I want to share with you a network innovation that can help you save money, eliminate risk, simplify your migration and deliver the most robust platform possible.”*
- Best Way In With The Customer.
 - **Voice Team:** Keep control over user experience, simple, cost effective. Compliment data team
 - **Data Team:** Reduce risk and complexity, create a network that is easy to manage and effective.
 - **CIO:** Create a robust platform that brings your team together and allows for a successfully project. Simplicity, security, QoS, reliability, future-proof are standard with Phybridge.
 - **CFO:** Significant cost savings, eliminate risk, ensure business continuity.

Win More Deals - Move Customers to IP What If You Can....



- ✓ ☒ Eliminate Infrastructure Barriers and Sell More IP Telephony
 - *No More Infrastructure Barriers*
- ✓ ☒ Shorten Sales & Deployment Cycles by 70% plus
 - *Leverage Existing Assets*
 - *Eliminate Disruption & Risk*
- ✓ ☒ Present a Stronger ROI to the Customer that is Better For You
 - *No ROI in Infrastructure*
 - *Allocate More to Applications*
- ✓ ☒ Have A Strong Differentiator That Resonates with the Customer
 - *Eliminate "Stay Digital" Competition*
- ✓ ☒ Protect and Enhance Your Net Margins
 - *Repeatable, Predictable, Scalable*
 - *Easy to Onboard Solution, Attractive Demo Offering.*
- ✓ ☒ Protect Your Brand
 - *Success - On Budget, On Time*
 - *Great Customer Experience*