

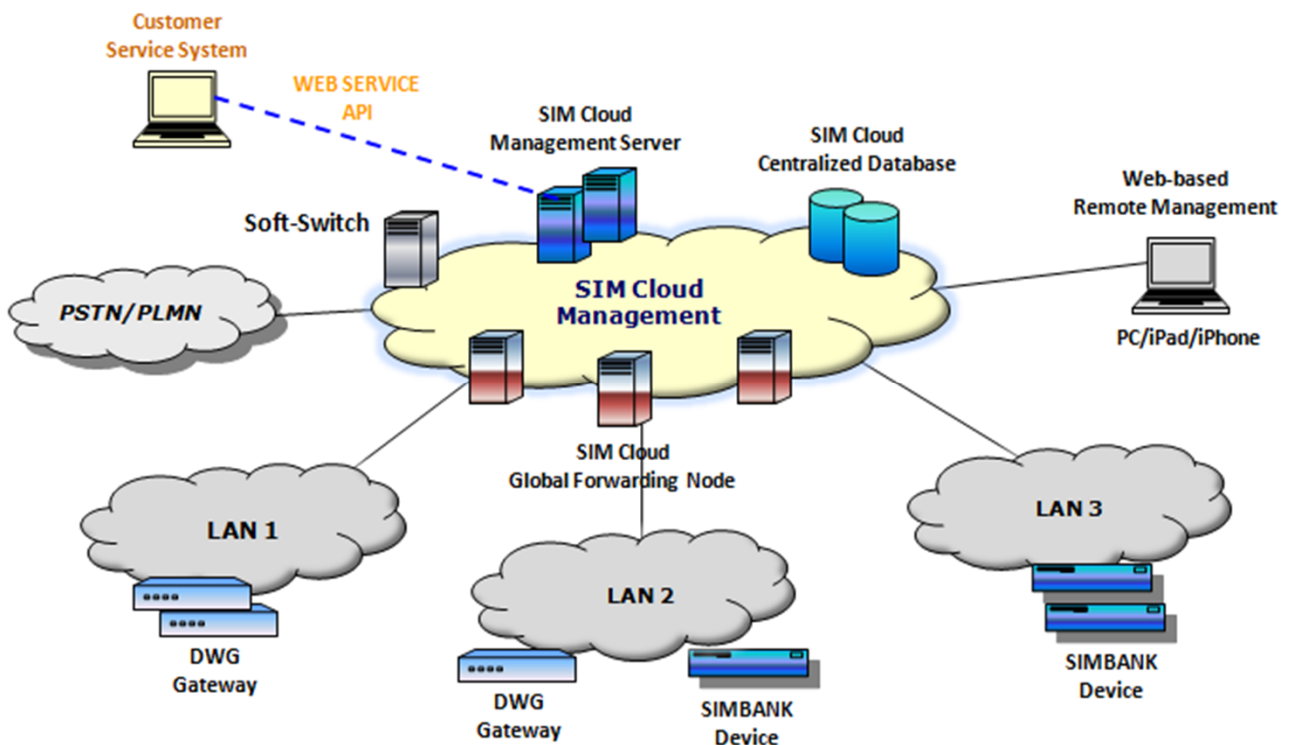


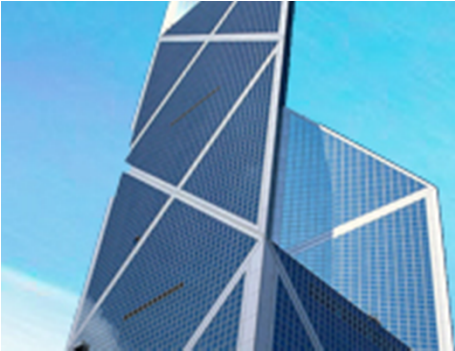
Focus Innovation Transformation

SIM Cloud

SIM Cloud is centralized SIM card management system which is based on the newest cloud communication technologies. Ready-To-Deploy, customer doesn't need to set up extra hardware server, and easy to start with SIM Cloud. SIM Cloud provides device management, SIM card management, human behavior simulation, real-time statistics and Open Web-Service API.

SIM Cloud Application





Decade Focused Creates the High-quality Products

Key Features

1. Ready-To-Deploy SIM Cloud
2. NAT Traversal and Global Forwarding Nodes
3. Remote Device Management and Alarm/Log Management
4. Flexible SIM Allocation and Credit Usage
5. Auto SMS/USSD/CALL Generation
6. SIM Promotion Apply/Balance Check/Auto Recharge
7. SIM Human Behavior Simulation
8. Real-time 15M/24H Statistics and Graphical ACD/ASR Report
9. Mass SMS/USSD/CDR History Records
10. Open Web-Service API and Customized Service
11. Bandwidth Compression and Signal/Media Encryption*
12. Anti Call Scanning and Black/White Number List*
13. Support Local Installation of Private SIM Cloud

Notes: “” marked feature will be supported in future releases.*

Deploy & Transmission

- Redundancy Servers in Cloud
- Commercial Database and High Security
- 24 Hours Database Backup
- Independent Customer Domain
- Support NAT Traversal
- Support Redundant Comm. Connections
- Signal/Media Bandwidth Compression
- Signal/Media Encryption and Decryption

Device Management

- Graphical WEB Interface
- Device Automatic Provision
- Support Multiple Timezones
- Support Run Status Monitoring
- Support Enable/Disable/Reset Operation
- Support Alarm/Log Management
- Support Batch Device Upgrade
- Support Remote-Web via NAT Traversal
- Support Remote-CLI via NAT Traversal



Customer First Services More Intimately

SIM Card Intelligent Allocation

- Support SIM Card Switchover by working time(BEGIN→END)
- Support SIM Card Switchover by working day (Mon, Tue, Wed ... Sun)
- Support Configurable SIM Groups
- Support Configurable Local Timezones
- Support Different SIM Card Priorities
- Support Different Billing Rates
- Support Configurable Statistics Rules
- Support Once/Day/Month/All Conditions
- Support Call Count/Call Time Conditions
- Support SMS/USSD Count Conditions
- Support SIM Work Time Conditions
- Support SIM Left Call Time Conditions
- Support SIM Left Balance Condition
- Support SIM Break Time Conditions

SIM Card Auto Promotion

- Support Promotion Apply via SMS/USSD
- Support Option/Number Interworking
- Support Promotion Balance Check by Left Call Time and Expired Time
- Support Master/Work SIM Card
- Support SIM Working Queue Management

SIM Card Human Behavior

- Support Static/Dynamic IMEI for SIM Card
- Support SIM Card Roaming among Different Sites(Site1 → Site2 → Site3 ...)
- Support SIM Card Promotion Management
- Support Auto Send SMS/USSD after SIM Card REG-OK
- Support Auto Send SMS/USSD at the End of Each Call
- Support Auto SMS Generation
- Support Auto Call Generation
- Support Abnormal CDR Detection
- Support Anti-Call-Scanning*
- Support Black/White Number List*

SIM Card Auto Recharge

- Support Balance Check via SMS/USSD
- Support Balance Check by Left Call Time
- Support Configurable Balance Inquiry
- Support Auto Recharge if SIM No Balance
- Support SIM Recharge via SMS/USSD/CALL
- Support Manual Recharge Operation
- Support Recharge Fail Detection
- Support Configurable Recharge Retries
- Support Paid Card List Importing
- Support Configurable Paid Card Groups



Trust Growth Cooperation Sharing

Performance Statistics

- Support 15Min/24Hour Performance Statistics
- Support Graphical ACD/ASR Statistics Report
- Support Statistics based on Domain
- Support Statistics based on Device
- Support Statistics based on Port
- Support Statistics based on SIM Group
- Support Statistics based on SIM Card
- Support Configurable Port/SIM Statistics
- Max 30 Days Records of 15Min Statistics
- Max 1 Year Records of 24Hour Statistics
- Support Mass CDR History Records
- Support Mass SMS/USSD History Records

SIM Cloud Capacity

- Based on TRIAL and PREMIUM License
- Max 1,024 Devices per Domain
- Max 16,384 SIM Cards per Domain
- Max 1,000,000 CDR Records per Domain
- Max 30 Days Records of 15Min Statistics
- Max 1 Year Records of 24H Statistics

Alarm/Log Management

- Support Device Alarm Reporting
- Support Configurable Alarm Levels
- Support Configurable Alarm Filters
- Support Current Alarm List
- Support History Alarm List
- Support Alarm Notification via E-Mail
- Support Alarm Notification via SMS
- Support Alarm Notification via CALL
- Support User Operation Log
- Support Device Running Log

Open Web-Service API

- Support API Security Authentication
- Support Device List Polling
- Support Device Info Polling
- Support Device Setting
- Support Port List Polling
- Support Port Info Polling
- Support Port Setting
- Support DWG-SIMBANK Port Binding
- Support SMS Sending
- Support Received SMS Polling
- Support USSD Sending
- Support Received USSD Polling
- Support Test Call Sending
- Support Test Call Result Polling
- Support CDR List Polling

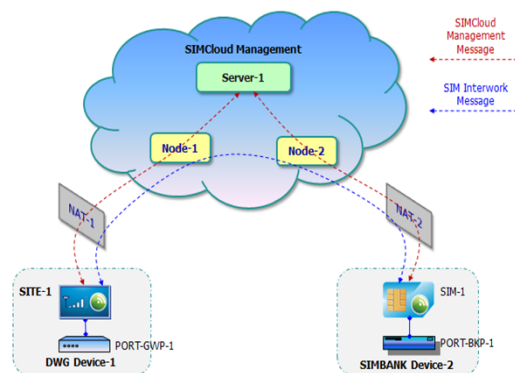


Focus Innovation Transformation

SIMBank

SIM Bank is a centralized storage device which allowing to store up to 128 SIM cards or any other smart card. Together SIM Server and GSM/CDMA VoIP Gateway, it provides complete wireless VoIP solution for clients based on cloud environment. Moreover, all SIM card information is process and transmits through private protocol ensure that high reliability IP network communication between SIMbank and GSM/CDMA VoIP Gateway.

Product Picture



Key Features

1. NAT Traversal
2. 64/124 Channels Optional
3. Dynamic Allocation of SIM Cards
4. High Reliability Data Transmit Mechanism
5. Remote SIM Card, Easy to Replace SIM Card
6. Hot Swap of SIM Cards with No Service Interruption
7. Remote Management, Easy to Maintain Devices



Make the Difference Make the Best

Specifications

Product	SIMBANK - 64/128
Capacity	64/128 Slots
Dimension (L x W x H)	530 * 305 * 90 mm
Weight	3.7 kg
Work Temperature	0-40 °C
Storage Temperature	-20-70 °C
Humidity	10%-90%
Power Supply	
Input	AC 220V 50Hz
Output	DC 12V 2A
Power Consumption	15W
Network	1 * RJ45 10/100 Base-TX